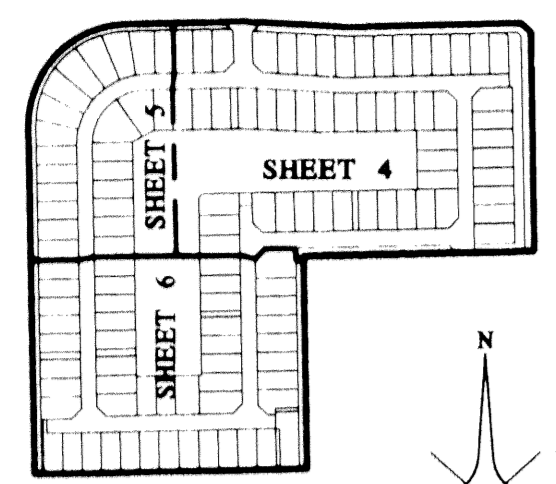


LESTER P.U.D. - PLAT FOUR

BEING A REPLAT OF PARCEL "C" & TRACT "D", LESTER P.U.D. - PLAT FIVE AS RECORDED IN PLAT BOOK 88, PAGES 78 THROUGH 83 OF THE PUBLIC RECORDS OF PALM BEACH COUNTY, FLORIDA. SITUATE IN THE SOUTHEAST ONE-QUARTER OF SECTION 35, TOWNSHIP 45 SOUTH, RANGE 42 EAST, PALM BEACH COUNTY, FLORIDA.
SHEET 4 OF 6
MAY, 2000



KEY MAP
1" = 500'

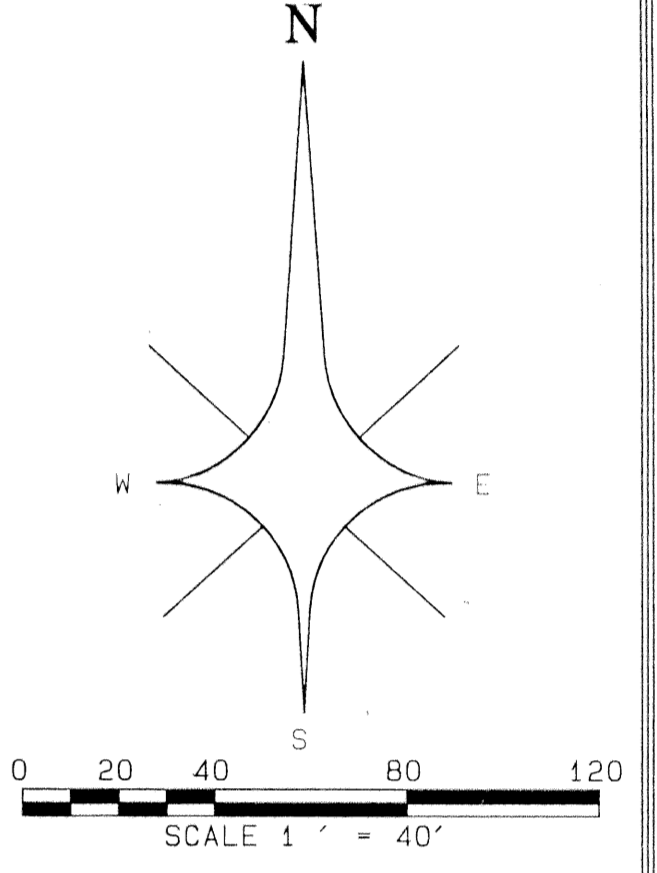
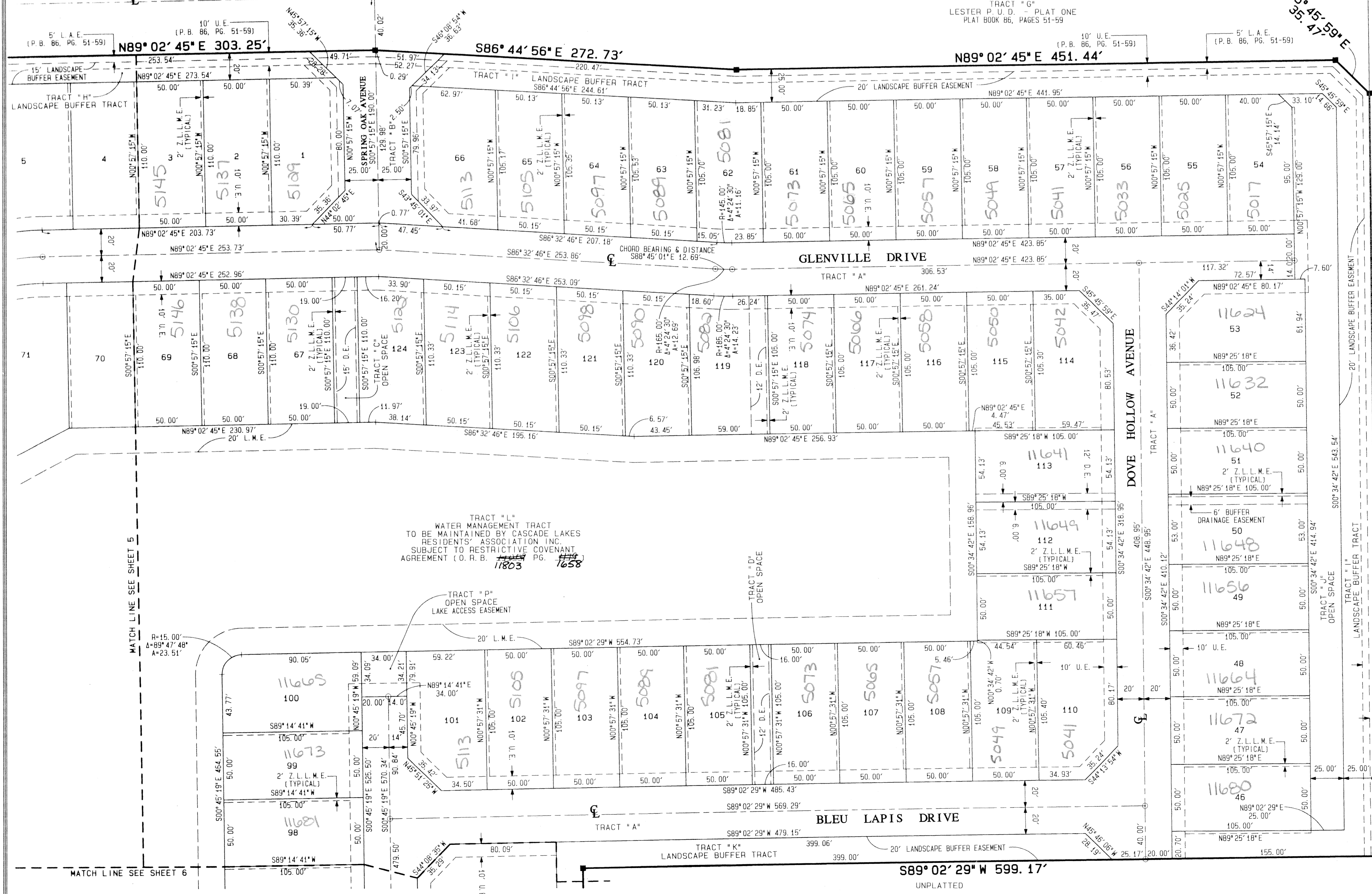
STATE OF FLORIDA } SS
COUNTY OF PALM BEACH }
THIS PLAT WAS FILED FOR
RECORD AT _____ DAY OF
THIS _____ AD. 20____ AND
DULY RECORDED IN PLAT BOOK
_____ ON PAGES _____ AND

DOROTHY H. WILKEN, CLERK
CIRCUIT COURT
BY: _____ DC

CASCADE LAKES BOULEVARD

TRACT "G"
LESTER P.U.D. - PLAT ONE
PLAT BOOK 86, PAGES 51-59

5' L.A.E.
(P.B. 86, PG. 51-59)
10' U.E.
(P.B. 86, PG. 51-59)
5' L.A.E.
(P.B. 86, PG. 51-59)



TRACT "L"
WATER MANAGEMENT TRACT
TO BE MAINTAINED BY CASCADE LAKES
RESIDENTS' ASSOCIATION, INC.
SUBJECT TO RESTRICTIVE COVENANT
AGREEMENT (O.R.B. PG. 11803, 11804, 11805, 11806, 11807, 11808, 11809, 11810, 11811, 11812, 11813, 11814, 11815, 11816, 11817, 11818, 11819, 11820, 11821, 11822, 11823, 11824, 11825, 11826, 11827, 11828, 11829, 11830, 11831, 11832, 11833, 11834, 11835, 11836, 11837, 11838, 11839, 11840, 11841, 11842, 11843, 11844, 11845, 11846, 11847, 11848, 11849, 11850, 11851, 11852, 11853, 11854, 11855, 11856, 11857, 11858, 11859, 11860, 11861, 11862, 11863, 11864, 11865, 11866, 11867, 11868, 11869, 11870, 11871, 11872, 11873, 11874, 11875, 11876, 11877, 11878, 11879, 11880, 11881, 11882, 11883, 11884, 11885, 11886, 11887, 11888, 11889, 11890, 11891, 11892, 11893, 11894, 11895, 11896, 11897, 11898, 11899, 11900, 11901, 11902, 11903, 11904, 11905, 11906, 11907, 11908, 11909, 11910, 11911, 11912, 11913, 11914, 11915, 11916, 11917, 11918, 11919, 11920, 11921, 11922, 11923, 11924, 11925, 11926, 11927, 11928, 11929, 11930, 11931, 11932, 11933, 11934, 11935, 11936, 11937, 11938, 11939, 11940, 11941, 11942, 11943, 11944, 11945, 11946, 11947, 11948, 11949, 11950, 11951, 11952, 11953, 11954, 11955, 11956, 11957, 11958, 11959, 11960, 11961, 11962, 11963, 11964, 11965, 11966, 11967, 11968, 11969, 11970, 11971, 11972, 11973, 11974, 11975, 11976, 11977, 11978, 11979, 11980, 11981, 11982, 11983, 11984, 11985, 11986, 11987, 11988, 11989, 11990, 11991, 11992, 11993, 11994, 11995, 11996, 11997, 11998, 11999, 12000.

- LEGEND:**
- Δ = CENTRAL ANGLE/DELTA
 - = CENTERLINE
 - CH = CHORD
 - DB = DEED BOOK
 - DE = DRAINAGE EASEMENT
 - FL = FLORIDA POWER AND LIGHT COMPANY
 - A = ARC LENGTH
 - L.A.E. = LIMITED ACCESS EASEMENT
 - L.M.A.E. = LAKE MAINTENANCE ACCESS EASEMENT
 - L.M.E. = LAKE MAINTENANCE EASEMENT
 - L.W.D.E. = LAKE WORTH DRAINAGE DISTRICT
 - NR = NON-RADIAL
 - NS = NOT TO SCALE
 - OR = OFFICIAL RECORDS BOOK
 - PB = PLAT BOOK
 - PG = PAGE
 - P.B. = POINT OF BEGINNING
 - P.C. = POINT OF COMMENCEMENT
 - R(R) = RADIUS (RADIAL)
 - R(F) = RADIAL TO FRONT LOT LINE
 - R(R) = RADIAL TO REAR LOT LINE
 - R(W) = RIGHT OF WAY
 - U.E. = UTILITY EASEMENT
 - W.C. = WITNESS CORNER
 - Z.L.L.M.E. = ZERO LOT LINE MAINTENANCE EASEMENT
 - PCP = PERMANENT CONTROL POINT (PCP)
 - PCP LB4820
 - PRM = PERMANENT REFERENCE MONUMENT (PRM)
 - SET PRM LB4820

ATLANTIC - CARIBBEAN MAPPING, INC.
3070 J06 ROAD - GREENACRES, FLORIDA 33467
(561) 964-7884; FAX (561) 964-1969

PROFESSIONAL
SURVEYORS
AND MAPPERS
LB4820

LESTER P.U.D. - Plat Four
SHEET 4 OF 6
DATE: 05/10/00
BY: JTB/MS
CHECKED: JTB/MS
SCALE: 1" = 40'